

MANGUSTA OCEANO 43#02 – UNASOLA

CAREFULLY USED YACHT



BUILDER: OVERMARINE GROUP

YEAR: 2017
ASKING PRICE: € 22.500.000

VAT: NOT PAID
FLAG: CAYMAN ISLAND

PORT OF REGISTRY: GEORGE TOWN
LOCATED: GOCEK, TURKEY

TYPE OF YACHT

Twin-screw diesel ocean going motor yacht of contemporary design, in the style of the Mangusta motor yachts, with a displacement hull form type. Propulsion comes from twin diesel engines, directly coupled to fixed pitch propellers (in-line configuration).

HULL

Steel Hull and Aluminium Superstructure, with appropriately spaced transversal and longitudinal stiffeners. Stainless Steel has been used when necessary to avoid corrosion problems.

CLASSIFICATION

ABS*A1, (E), Yachting Service, (* AMS. Vessel built according to MCA – LY3 compliance for Commercial Yacht Service unrestricted navigation.

DIMENSIONS

LENGHT OVERALL	43.04 M	141'2"
LENGHT ON WATERLINE	36.74 M	120'6"
BEAM	8.70 M	28'6"
HALF LOAD DRAFT	2.35 M	7'8"
DISPLACEMENT AT FULL LOAD	~ 410 T	904,000 LBS
DISPLACEMENT AT HALF LOAD	~ 375 T	827,000 LBS
GROSS TONNAGE	451 GT	

TANK CAPACITY

FUEL CAPACITY	~ 65,300 L	17,250 US GALS
WATER CAPACITY	~ 13,500 L	3,500 US GALS
GREY & BLACK WATER	~ 8,300 L	2,200 US GALS

PROPULSION

MAIN ENGINES POWER	2 x MTU 12V2000 M72 1450HP (1080kW) @ 2250 RPM
HOURS	PORT: 2600 / STBD: 2600
STABILIZER	CMC MARINE model STABILIS ELECTRA SE160 ZERO SPEED stabilizers with 2 x 3,0 m2 fins
GENERATORS	2 X KOHLER 100 EFODJ – each 99 kW capacity
HOURS	PORT: 8545 / STBD: 8390

PERFORMANCE

MAX SPEED HALF LOAD	~ 15 KNOTS
CRUISING SPEED HALF LOAD	~ 11 KNOTS
RANGE AT CRUISING SPEED	~ 4500 NAUTICAL MILES

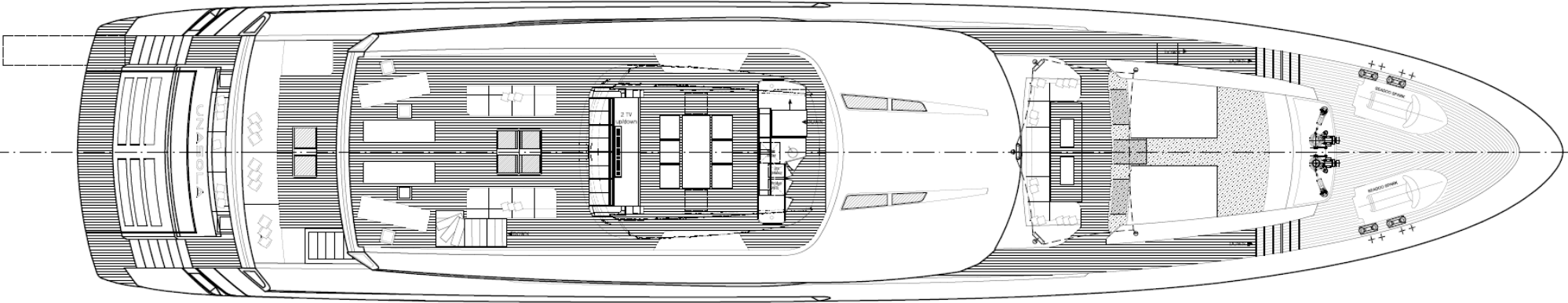
ACCOMMODATION

GUEST CABINS	1 OWNER + 2 VIP DOUBLE + 2 TWIN GUEST (with additional Pullman bed each)
CREW CABINS	1 CAPTAIN + 3 TWIN CREW

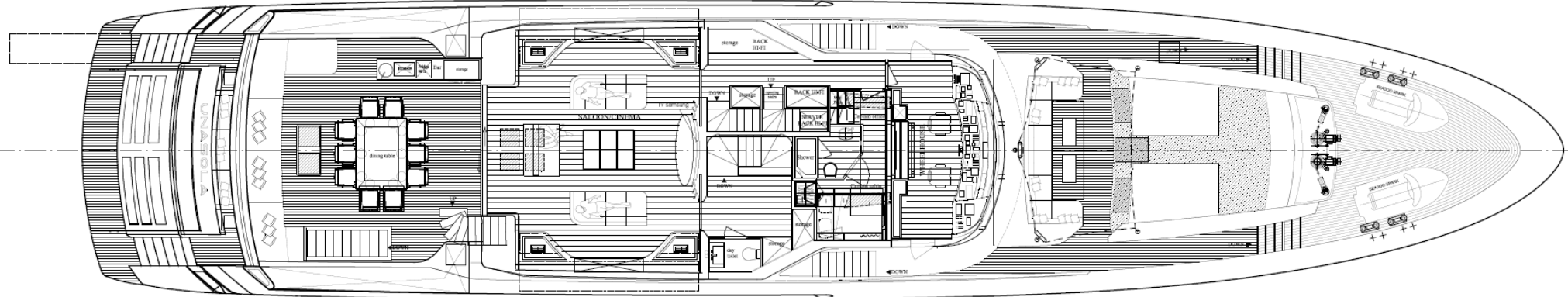
PROFILE



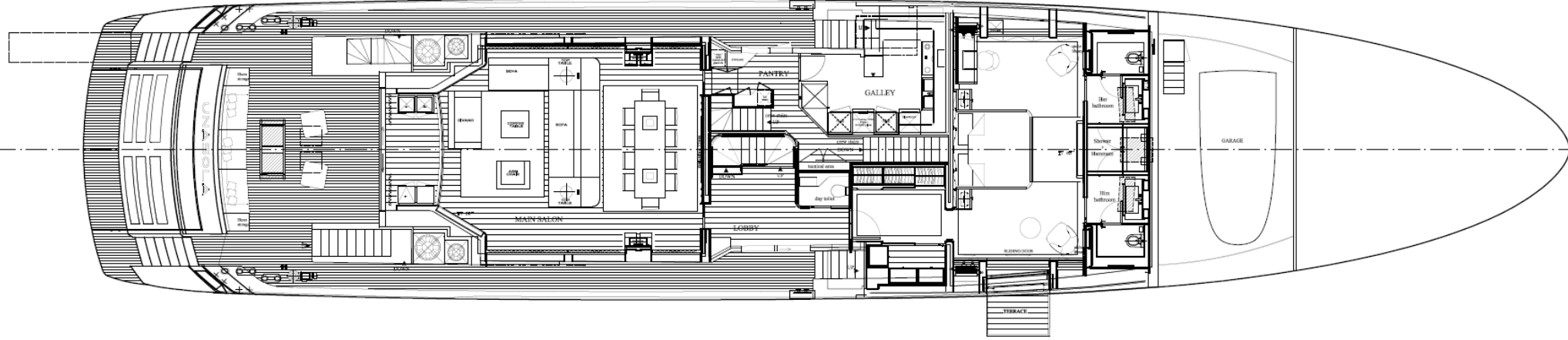
SUN DECK



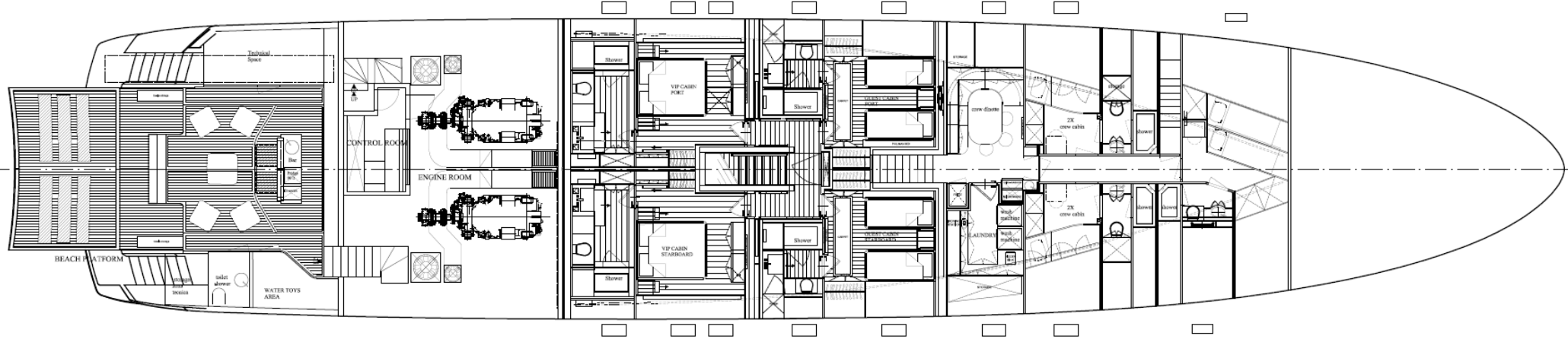
UPPER DECK



MAIN DECK



LOWER DECK



FULL OPTIONAL LIST

- Tender CASTOLDI 16 (5.08m) with 110hp. YANMAR diesel engine and jet drive
- 2 x SEADOO Spark Trixx 2-UP 90hp. Jetskis
- Atlas carbon crane 2200 kg weight capacity

PROPULSION

Two MTU 12V2000 M72 four stroke marine diesel propulsion engines producing 1450hp. (1080kW) each. Each engine is fitted with a flanged-on ZF 3350 marine transmission gearbox and a direct shaft line with fixed pitch propellers.

STEERING SYSTEM

Steering hydraulic system

DIESEL GENERATOR

Two KOHLER model 100 EFODJ marine generator, each 99 kW, 400VAC/3ph/50Hz

BOW THRUSTER SYSTEM

CMC Marine DUALIS BTM 85EA model – 85kW 400V/3ph/50Hz

STABILIZER SYSTEM

2 Stabilizers by CMC Marine Stabilizing Fins STABILIS ELECTRA SE160 model - 3,0 sqm for zero speed and underway. Power supply 400VAC/3ph/50Hz

ONBOARD SYSTEMS

FUEL SYSTEM

- Fuel Purifier: 1x NFV KFWA2by (Mtu supply) 400VAC/3ph/50Hz – 1668lph
- Fuel Transfer Pump: 2x el/pumps Gianneschi ACB 331/B 400V/3ph/50Hz (or equivalent) – Max 7,2 m3/h – Max 30m;
- Fuel Priming Pump: 1x el/pumps Gianneschi CP 20/1G 24VDC (or equivalent);
- Tender Filling Pump: 1x el/pumps Gianneschi PE56 (or equivalent);
- Engine Fuel Prefilter: Parker DFBO10/5micron - Duplex (Mtu supply) with water alarm sensor
- DDGG Fuel Prefilter: Racor (DUPLEX) 75/500 MAXM (30micron) with water alarm sensor

BILGE/FIRE-FIGHTING SYSTEM

- 2x pump Gianneschi ACB 531 (or equivalent) – 400VAC/3ph/50Hz
- 1x Bilge Oily Water Separator in accordance with Marpol Annex I
- 1x Emergency Pump (Diesel) outside Engine Room - Gianneschi M ACB 531

AIR CONDITIONING SYSTEM

One seawater cooled tempered water unit shall be installed in the engine room. The system will provide cool air in the summer and hot air in the winter time.

- n° 04 Mod. 604NT CHILLER ~4x 8kW;
- n° 04 independent units/compressors
- each unit driven through Inverter
- electric supply 400V - 3 phases - 50 Hz;
- total refrigeration output 4x 120.000 BTU/h;
- Sea water/gas heat exchanger made out of Cu Ni elements
- Fresh water/gas heat exchanger made out of AISI 316 elements
- Display with visualization of inlet/outlet treated water temperature;
- System totally enclosed with noise insulated Aluminium casing.

DECK EQUIPMENT

- Two Posidonia anchors Galvanized High Tensile Steel of 320 Kg (each) mod. High Holding Power.
- 2 X 19mm 140m galvanized chain
- Two Vertical Capstans 4 kW 400V/3ph/50Hz or equivalent on the aft deck, one Port and one Stbd.
- One stern gangway, electro hydraulic type, 500 mm walk width, max load 150 kg, ~6m length. The gangway has swiveling and tilting capabilities (15° both up and down). Remote and local controllers
- One accommodation ladder (aluminium construction with teak treads), electro hydraulic type, 500 mm walk width, max load 150 kg, remote and local controllers. Ladder is housed in horizontal position under the main deck on starboard side. Lighting, gratings and back plate and fitted with fixed platform, stainless steel stanchions and rope rails at top platform. Accommodation Ladder control is through a fixed panel
- One electro hydraulic swim ladder is provided, fitted inside Stern Door and used when door is Open. Ladder is made out of Stainless steel with teak steps

- Fwd "Infinity Pool", having a capacity of about 3.5m³:
- Sea water supply and "in line heater" having a capacity of 9+9kW.
- Hydro-massage with "nozzles" outlet position according to final geometry of the pool.
- Lighting System having number/positions of lights according to final geometry of the pool.

SAFETY EQUIPMENT

ACCORDING TO CLASS REQUIREMENT

- LIFERAFTS 4 X 10 PERSON
- FOUR LIFEBOOYS, (TWO WITH SMOKE SIGNAL AND LIGHT, TWO WITH 30 M BUOYANT LINES) INSTALLED IN SPECIFIC RECESSES. PAINTED WITH NAME OF YACHT AND PORT OF REGISTRY
- ADULT & CHILD LIFEJACKETS

HOUSEHOLD APPLIANCES

SUN DECK

- N° 01 ICE CUBE MAKER
- N° 01 REFRIGERATOR
- N° 01 WINE COOLER – LIEBHERR

UPPER DECK

- N° 01 ICE CUBE MAKER
- N° 01 REFRIGERATOR

MAIN DECK

PANTRY

- N° 01 WINE COOLER – LIEBHERR
- N° 01 ICE CUBE MAKER

OWNER SUITE

- N° 01 REFRIGERATOR

SALON AREA

- N° 01 ICE CUBE MAKER
- N° 01 REFRIGERATOR

GALLEY

- N° 01 OVEN - MIELE H 6890 BP
- N° 01 HOT PLATES - MIELE KM 6386
- N° 01 EXHAUST HOOD - MIELE DA 3490
- N° 01 MICROWAVE, WITH STAINLESS STEEL FRONT - MIELE M 6260
- N° 01 DISHWASHER - MIELE G 7856
- N° 01 CUSTOM FRIDGE / FREEZER

BEACH AREA

- N° 01 ICE CUBE MAKER
- N° 01 REFRIGERATOR

TENDER, CHASE BOAT AND JETSKI

TENDER

- 1 X CASTOLDI 16" (5.08m) with 110hp. YANMAR diesel engine and jet drive.

JETSKI

- 2 x SEADOO Spark Trixx 2-UP 90hp. Jetskis

NAVIGATION SYSTEMS & CCTV

WHEELHOUSE

- N° 05 MONITOR FURUNO MU190E 19" WHEELMARK APPROVED – IMO
- N° 01 MAXSEA NAVIGATION PC ECS - CHART SYSTEM
- N° 01 FURUNO GPS DGPS GP-170D WHEELMARK APPROVED IMO
- N° 01 FURUNO GPS GP-33 GP-150
- N° 01 SIMRAD CG80 - GYROCOMPASS - WHEELMARK APPROVED-IMO
- N° 01 HR80 REPETER GYRO AR80
- N° 01 FURUNO RADAR #1 ARPA X BAND FAR-2117 WHEELMARK APP. IMO 12KW ANTENNA RADIATOR ASS. XN20AF 6.5FT
- N° 01 FURUNO RADAR #1 ARPA X BAND FAR-2117 WHEELMARK APP. IMO 12KW ANTENNA RADIATOR ASS. XN12AF 4FT
- N° 01 FURUNO NAVIGATION ECHOSOUNDER WHEELMARK APPROVED FE-800 LESS HULL UNIT + TRANSDUCER 50B-6B PLASTIC
- N° 01 FURUNO DOPPLER SPEEDLOG SYSTEM WHEELMARK APPROVED DOPPLER SPEED LOG FURUNO DS80
- N° 01 FURUNO WIND TRANSDUCER FI-5001
- N° 02 FURUNO FI-70 MULTIFUNCTIONS DISPLAY DATA REPETER
- N° 01 AP70 AUTOPILOT
- N° 01 AC80A AUTOPILOT PROCESSOR
- N° 01 SIMRAD RC 42 COMPASS RATE
- N° 01 FURUNO AIS TRANSPONDER FA 170 CLASS A
- N° 01 FURUNO FURUNO BNWAS SYSTEM WHEELMARK APPROVED
- N° 01 FM 8900S GMDSS CLASS A
- N° 01 FURUNO RB-8900 REMOTE HANDSET
- N° 01 SIMRAD VHF/AIS RS90
- N° 01 FURUNO SSB HF/MF GMDSS CLASS A - WHEELMARK APPROVED IMO FS1575 TRANSCEIVER UNIT DSC 150W
- N° 01 FURUNO NAVTEX NX700
- N° 01 FURUNO INMARSAT STD C / LRIT - WHEELMARK APPROVED IMO FELCOM18 INMARSAT-C + N°02 SSAS ALERT UNITS IC307
- N° 01 INTERCOM SYSTEM PHONOTECH CIS 3101
- N° 01 M-SERIES FLIR SYSTEM M-625XP 9HZ

WING STATIONS

- N° 02 FURUNO FI-70 MULTIFUNCTIONS DISPLAY DATA REPETER
- N° 02 SIMRAD VHF HS 35 WIRELESS (ONE FOR EACH STATION)

CREW MESS / DINETTE

- N° 01 MONITOR HATTELAND HD 15T21MMD CCTV
- N° 01 FURUNO FI-70 MULTIFUNCTIONS DISPLAY DATA REPETER
- N° 01 9001 - INDOOR UNIT, WALL MOUNTED
- N° 01 FURUNO FURUNO BNWAS BR 540

CAPTAIN CABIN

- N° 01 FURUNO FURUNO BNWAS BR 540
- N° 01 FURUNO FI-70 MULTIFUNCTIONS DISPLAY DATA REPETER

CREW CABIN STBD. 1ST OFFICER

- N° 01 01 FURUNO FURUNO BNWAS BR 540

ENGINE CONTROL ROOM

- N° 01 9003 - SUBSTATION FOR HEADSET
- N° 01 9001 - INDOOR UNIT, WALL MOUNTED
- N° 01 MONITOR HATTELAND HD 15T21MMD CCTV

STEERING GEAR ROOM

- N° 01 RF14XU FEEDBACK AUTOPILOT
- N° 01 COMPASS REPETER RD-50
- N° 01 9003 - SUBSTATION FOR HEADSET

STEERING GEAR ROOM

- N° 01 9052 – INTERCOM SUB STATION

CCTV EQUIPMENT

- N° 10 CCTV AXIS CAMERA PTZ P5512E (1 X ARCH, 1 X FLYBRIDGE, 3 X EXTERNAL MAIN DECK, 1 X EXTERNAL UPPER DECK, 2 X ENGINE ROOM, 1 X GARAGE, 1 X BEACH AREA)
- N° 02 AXIS CAMERA P1214E (ANCHOR PORT & STBD.)
- N° 01 CCTV SERVER VIDEORECORDER NEXTWORK NXVISION D800 (IP CCTV SERVER, UP TO 8 IP CAMERAS, WEB ACCESS, 1 TB RAID1 DISK SPACE)
- N° 02 MONITOR 19" HATTELAND HD 19T21 MMD CONTROL ROOM, CREWMESS

- N° 01 CAMERA BROADCAST MODULE
- N° 03 CONTROL STATION 1 X CREW MESS, 1 X CONTROL ROOM, 1 X BRIDGE

NETWORKING

- N° 04 CISCO SG 300-28P, 24 PORTS 10/100/1000 MBPS
- N° 01 CISCO 2500 WIRELESS CONTROLLER
- N° 13 CISCO AIRONET 1130 802.11G LWAPP
- N° 01 PEPLINK PEPWAVE BR-1 4G ACCESS ROUTER
- N° 01 SERVICE SELECTOR NXWALL
- N° 01 HARBOUR 2.4 GHZ WI-FI ANTENNA IEEE 802.11B/G

TELEPHONE SYSTEM

- N° 01 ADVANCED IPBX
- N° 02 DOOR PHONE
- N° 02 GRANDSTREAM GXP-2140
- N° 17 INCOM ICW-1000G WI-FI PHONE

SAT ANTENNA

- N° 01 SEATEL TV80
- N° 01 SAILOR V-SAT 900

MAIN DECK HI-FI

DECK SALON

- N° 01 TV 65" SAMSUNG 7500 SERIES
- N° 01 JM LAB CUB2 SUBWOOFER
- N° 05 JM LAB IW 1002 SPEAKERS
- N° 01 A/V RECEIVER DENON AVR X-4200 SERIES
- N° 01 SONY BDP-S1500 REGION FREE
- N° 01 SEALUX HD/3D A/V CLIENT
- N° 01 APPLE IPAD MINI 4 16GB
- N° 01 SATELLITE DECODER (OWNER'S SUPPLY)

AFT MAIN DECK

- N° 04 SONANCE XTR 6,5" WATERPROOF LOUDSPEAKER (ZONE 2 MAIN DECK SALON AMPLIFIER)

OWNER'S SUITE

- N° 01 TV 65" SAMSUNG 7500 SERIES
- N° 01 JM LAB CUB2 SUBWOOFER
- N° 05 JM LAB IW 1002 SPEAKERS
- N° 01 A/V RECEIVER DENON AVR X-4200 SERIES
- N° 01 SONY BDP-S1500 REGION FREE
- N° 01 SEALUX HD/3D A/V CLIENT
- N° 01 APPLE IPAD MINI 4 16gb
- N° 01 SATELLITE DECODER (OWNER'S SUPPLY)

OWNER'S BATHROOM

- N° 02 JM LAB IW 106 SPEAKERS BATHROOM (X2 BATHROOM)

UPPER DECK HI-FI

CINEMA/SALON

- N° 01 TV 78" SAMSUNG CURVED UHD 4K 8500 SERIES
- N° 01 JM LAB CUB2 SUBWOOFER
- N° 05 JM LAB IW 1002 SPEAKERS
- N° 01 A/V RECEIVER DENON AVR X-4200 SERIES
- N° 01 SONY BDP-S1500 REGION FREE
- N° 01 SEALUX HD/3D A/V CLIENT
- N° 01 APPLE IPAD MINI 4 16gb
- N° 01 SATELLITE DECODER (OWNER'S SUPPLY)

AFT UPPER DECK

- N° 04 SONANCE XTR 6,5" WATERPROOF LOUDSPEAKERS
- N° 01 APPLE AIRPORT EXPRESS

FORE UPPER DECK

- N° 06 SONANCE XTR 6,5" WATERPROOF LOUDSPEAKERS
- N° 01 APPLE IPAD MINI 4 16gb

SUNDECK HI-FI

- N° 02 TV 48 LED SAMSUNG 7500 SERIES (UP&DOWN)
- N° 06 SONANCE XTR 6,5" WATERPROOF LOUDSPEAKERS
- N° 01 A/V RECEIVER DENON AVR X-1200 SERIES
- N° 01 SEALUX HD/3D A/V CLIENT
- N° 01 APPLE IPAD MINI 4 16gb
- N° 01 SATELLITE DECODER (OWNER'S SUPPLY)

BEACH AREA HI-FI

- N° 02 SONANCE XTR 6,5" WATERPROOF LOUDSPEAKERS
- N° 01 A/V RECEIVER DENON AVR X-1200 SERIES
- N° 01 SEALUX AUDIO CLIENT
- N° 01 APPLE IPAD MINI 4 16gb

CABIN DECK HI-FI

FORE PORT GUEST CABIN

- N° 01 TV 40"LED SAMSUNG 7000 SERIES
- N° 02 JM LAB IW 706 SPEAKERS
- N° 01 JM LAB CUB2 SUBWOOFER
- N° 01 A/V RECEIVER DENON AVR X-1200 SERIES
- N° 01 SONY BDP-S1500 REGION FREE
- N° 01 SEALUX HD/3D A/V CLIENT
- N° 01 APPLE IPAD MINI 4 16gb
- N° 01 SATELLITE DECODER (OWNER'S SUPPLY)

FORE STARBOARD GUEST CABIN

- N° 01 TV 40"LED SAMSUNG 7000 SERIES
- N° 02 JM LAB IW 706 SPEAKERS
- N° 01 JM LAB CUB2 SUBWOOFER
- N° 01 A/V RECEIVER DENON AVR X-1200 SERIES
- N° 01 SONY BDP-S1500 REGION FREE
- N° 01 SEALUX HD/3D A/V CLIENT
- N° 01 APPLE IPAD MINI 4 16gb
- N° 01 SATELLITE DECODER (OWNER'S SUPPLY)

AFT PORT GUEST CABIN

- N° 01 TV 40"LED SAMSUNG 7000 SERIES
- N° 02 JM LAB IW 706 SPEAKERS
- N° 01 JM LAB CUB2 SUBWOOFER
- N° 01 A/V RECEIVER DENON AVR X-1200 SERIES
- N° 01 SONY BDP-S1500 REGION FREE
- N° 01 SEALUX HD/3D A/V CLIENT
- N° 01 APPLE IPAD MINI 4 16gb
- N° 01 SATELLITE DECODER (OWNER'S SUPPLY)

AFT STARBOARD GUEST CABIN

- N° 01 TV 40"LED SAMSUNG 7000 SERIES
- N° 02 JM LAB IW 706 SPEAKERS
- N° 01 JM LAB CUB2 SUBWOOFER
- N° 01 A/V RECEIVER DENON AVR X-1200 SERIES
- N° 01 SONY BDP-S1500 REGION FREE
- N° 01 SEALUX HD/3D A/V CLIENT
- N° 01 APPLE IPAD MINI 4 16gb
- N° 01 SATELLITE DECODER (OWNER'S SUPPLY)

CREW AREA HI-FI

CREW MESS

- N° 01 TV LED SAMSUNG 28"
- N° 02 JM LAB IW 106 SPEAKERS
- N° 01 A/V RECEIVER DENON AVR X-1200 SERIES
- N° 01 APPLE IPAD MINI 4 16gb
- N° 01 SATELLITE DECODER (OWNER'S SUPPLY)

CREW CABIN X2

- N° 01 TV LED SAMSUNG 22"
- N° 01 SATELLITE DECODER (OWNER'S SUPPLY)

GALLEY

- N° 01 BEATS PILL

FIRST OFFICER CABIN

- N° 01 TV LED SAMSUNG 22"
- N° 01 SATELLITE DECODER (OWNER'S SUPPLY)

CAPTAIN CABIN

- N° 01 TV LED SAMSUNG 28"
- N° 02 JM LAB IW 106 SPEAKERS
- N° 01 A/V RECEIVER DENON AVR X-1200 SERIES
- N° 01 SEALUX HD/3D A/V CLIENT
- N° 01 APPLE IPAD MINI 4 16gb
- N° 01 SATELLITE DECODER (OWNER'S SUPPLY)

ENGINE DEPARTMENT INVENTORY

PUMPS - GIANNESCHI PUMPS & BLOWERS

- FIRE & BILGE PUMP - EMERGENCY DIESEL SERVICE KIT (IMPELLER, SEAL, SEEGER, O-RINGS, SEAL SPACER, SPLINE) 1 PCS
- MOTOPOMPA MACB 531 - EMERGENCY DIESEL SERVICE KIT (IMPELLER, SEAL, SEEGER, O-RINGS, SEAL SPACER, SPLINE) 1 PCS
- EL/POMPA ACB 331/B B 230/400V - DIESEL TRANSFER SERVICE KIT (IMPELLER, SEAL, SEEGER, O-RINGS, SEAL SPACER, SPLINE) 1 PCS
- EL/POMPA CP20 A1 G 24V - DIESEL PRIMING SERVICE KIT (IMPELLER, SEAL, SEEGER, O-RINGS, SEAL SPACER, SPLINE) 1 PCS
- GRUPPO 2 JET 518B - WATER DISTRIBUTION SERVICE KIT (IMPELLER, SEAL, SEEGER, O-RINGS, SEAL SPACER, SPLINE) 1 PCS
- EL/POMPA MVI60 230/400V GREY AND BLACK WATER SERVICE KIT (IMPELLER, SEAL, SEEGER, O-RINGS, SEAL SPACER, SPLINE) 1 PCS
- SPARE FRESH WATER PUMP FOR A/C
- SPARE SEA WATER PUMP FOR A/C
- SPARE SEA WATER PUMP FOR FRIDGES

MTU

- FUEL FILTER 2PCS
- OIL FILTER 2PCS
- FUEL PRIMARY FILTER 2PCS

KOHLER GENERATORS - 100 EFOZDJ - 99KW

- REBUILT KIT (PRIMARY FUEL FILTER, SECONDARY FUEL FILTER, OIL FILTER, IMPELLER, ANODES) 2 PCS
- AIR FILTER 2 PCS
- SPARE SEA WATER PUMP

STP SELMAR - BLUE SEA 12000 SPECIAL

- INTERNAL LEVEL SWITCH (MID, MED, MAX, OVERFLOW) 2PCS
- OVERFLOW LEVEL SWITCH (FOR EXTERNAL SEWAGE HOLDING TANK) 2PCS
- MINIMUM LEVEL SWITCH (FOR EXTERNAL SEWAGE HOLDING TANK, MAX LENGHT 1500MM) 2 PCS
- CAN 2OLT. DOSING CHEMICAL 2PCS

IDROMAR

FRESH WATER + WATER MAKER SYSTEMS + WATER SOFTENER

ELECTRICAL KIT

- TRANSFORMER 50VA 1 PCS
- FUSE KIT 10A
- FUSE KIT 10,3X38 10A (N° 3) 1 PCS
- FUSE KIT 2A
- FUSE KIT 5X20 2A (N° 5) 1 PCS
- FUSE KIT 4A
- FUSE KIT 5X20 4A (N° 5) 1 PCS

GENERAL PARTS

- 10MP25/50 FILTER N.1 26 PCS
- 10MP5/50FILTER N.2 26 PCS
- REGENERATION KIT (WATERMAKER) 2PCS
- CARTRIDGE FILTER 30 PCS
- IDROMAR STAINLESS STEEL FILTER CARBON FITLER 2 PCS
- WATER SOFTENER IDROFAST 9100 SALT BAG 25 KG 4 PCS
- UV LAMP 2PCS

FRIGOMAR

AIR CONDITIONING – FRIGOMAR 913

- ZINC 995 ANOD THREAD 1"8 12 PCS
- ROOM THERMOSTAT WITH POWER BOX 400W, DISPLAY 2 PCS
- ROOM THERMOSTATWITH POWER BOX 400W, DISPLAY 1 PCS
- CARD CAPACITORS FOR VARIABLE SPEED FAN COIL (MOUNTED ON FANCOIL) FOR EACH FAN COIL 4 PCS
- VENTILATOR FOR FAN COIL MOD. B1 1 PCS
- VENTILATOR FOR FAN COIL MOD. T1 - V - Z3 4 PCS

FRIDGE / FREEZER

- SOLEINOID VALVE 24 VDC 1/4 SAE 1 PCS

ICE MAKERS

- EXPANSION VALVE 1 PCS

OIL

- CAN LT.20 ARNICA 46 OIL (HYDRAULIC PACK FOR GANGWAYS, GARAGE DOOR) 2PCS
- CAN LT.20 RIMULA 10W30 1PCS
- CAN LT.20 10W40 14PCS
- CAN LT.20 SHELL OMALA 2PCS

MOTOMAR

GANGWAY

- BES M18MI-PSC80B BV05 INT. DI PROX SENSORS 1 PCS

SIDE LADDER

- BMF 0012 INT. DI PROX SENSORS 1 PCS
- BES M18MI-PSC80B BV05 INT. DI PROX SENSORS 1 PCS
- BES M18MI-PSC80B BV05 INT. DI PROX SENSORS 1 PCS

AFT BEACH PLATFORM

- BES M18MI-PSC80B BV05 INT. DI PROX SENSORS 1 PCS
- BMF 0012 INT. DI PROX SENSORS 5 PCS

TRAVEL

- BES M18MI-PSC80B BV05INT. DI PROX SENSORS 1 PCS
- BMF 0012 INT. DI PROX SENSORS 1 PCS

BALCONY

- BMF 0012 INT. DI PROX SENSORS 1 PCS

GENERIC SPARE

- LIGHT SWITCH D.22MM 1 PCS
- SCHLEGEL SPIA D.22MM 1 PCS

- LIGHT SELECTOR D.22 1 PCS
- EAO 84-5040.0020 NOT LIGHTED 2NC 1 PCS
- OMEGA Q8F1CXXG24E GREEN 1 PCS
- OMEGA Q8F1CXXR24E RED 1 PCS
- ABB MAIN SWITCH 1 PCS
- EAO (SERIE 82) LIGHT SWITCH D.19 1 PCS

BATTERY

- SPARE BATTERY 12V 2PCS

ELECTRICAL - AUTRONICA SMOKE DETECTOR

- CALL POINT TEST TOOL 4 PCS

PLANUS - TOILET

- PW.065.00 SOLENOID VALVE 230V 1 PCS
- PW.030.00 TRANSFORMER 230-12V 1 PCS
- PW.015.00 WALL SWITCH STANDARD 2P 1 PCS
- PW.034.00 DISCHARGE PUMP 230V AC 1 PCS
- PW.007.01 HOSE IMMISION WATER 1 PCS
- PW.005.00 DISCHARGE HOSE 1 PCS
- PRO LIFT MONO 230V 2 PCS
- PW.003.00 HOSE PUMP TOILET 1 PCS

POOL

- PW.065.00 SOLENOID VALVE 230V 1 PCS
- PW.030.00 1KG MULTITABLET KIT 2PCS
- PVC FITTINGS KIT (FOR POSSIBLE SYSTEM REPAIR)
- PVC GLUE
- REPLACEMENT FILTER CARTRIDGES IN STAINLESS STEEL 21 PCS
- MAGNESIUM ANODE 3 PCS

TOOLS

- TOOLS DRAWER MOBILE ROLLER 740X445X955 WITH 6 DRAWERS
- V-MAXX GOGGLE
- EARPHONES BILSOM 303L (NOT 3M)
- OFFICE CHAIR FOR ENGINE ROOM
- SET 8PZ ALLENKEY LONG BALL END
- N° 06 FLAT SCREWDRIVERS BIG BETA
- N° 06 FLAT SCREWDRIVERS SMALL BETA
- N° 04 CROSS SCREWDRIVERS BETA
- N° 01 SET FLAT SPANNERS 8-24MM BETA
- PLIERS FOR SUPPLY BETA
- CRIMPING PLIERS FOR POWER SUPPLY WITH SET OF INSERT N°1
- SMALL SET 1/4 32 PIECES
- COMBINATION PLIERS SET OF 3FLAT PLIERS 125MM
- FLAT PLIERS 200MM BETA
- BIT-SET 32PZ COLOR P.INS.+PH/PZ/E/TG/TX/TXH
- BETA MULTIGRIP PLIERS 190
- BETA 1082BM 160 WIRE CUTTING PLIERS LARGE 160
- BETA 1082 WIRE CUTTING PLIERS SMALL 140
- MULTIMETER FLUKE 179 SERVICE STANDARD INSTRUMENT
- IREGA ADJUSTABLE WRENCH LITTLE 77-12 MM.300
- IREGA ADJUSTABLE WRENCH BIG 77 8MM.200
- BETA TECHNICAL FABRIC TOOL BAG C10S
- BETA 1390 35 PLASTI HAMMER 35
- BETA 1370 WOOD HAMMER 300GR
- BETA 1370 WOOD HAMMER 800GR
- BETA 1491 WRENCH FOR OIL FILTERS CHANGE
- BETA 1128BM SCISSORS
- LEATHERMAN SIDEKICK
- LED LENSER RECHARGEABLE MH7 GREY WINDOW BOXBETA WRENCHING BAR 450MM 965
- BETA BIG FAT WRENCHING BAR 800MM.

- BETA 1712E/1 FLESSIBILI MAGNETICI EASY KG 0,5
- DEWALT ANGLE GRINDER 800W 220V 115MM
- BETA IMPACT WRENCH GUN 1927XM/K5 WITH SOCKETS 18/22/27/34
- BETA AIR HOSE 10 MT.
- DIGITAL CALLIPER 3 FUNCTION L.150
- MANUAL CALLIPER MM.150X0.05
- KMT-8A MINI TERM RAGGI INFRAREDI 138.PHG600-3
- MACHINIST VISE BIG ONE 100 MM STANLEY
- HEAT GUN PHG 600-3
- BETA BEARING PULLER SET 1545/C5M
- BIG SET BUSSOLE 23 PZ + ACCESSORI 1/2" VAL.METALLO
- BETA 415CO/SP19A PUNTE RET HSS COBALTO 5% SR19PZ
- PIPE WRENCH SMALL 250 BETA
- PIPE WRENCH BIG 600 BETA
- BETA 1726 HACKSAW WITH BLADE TENSIONINGCHAIN BLOCK 1 TON
- BETA SPANNERS FROM 6 TO 32MM 13 PIECES
- KACKSAW CLASSIC 328H/16
- BETA METRIC THREAD TOOLS 446/C30
- GREASE GUN WITH HOSE FOR CARTRIDGE DA GR.400
- BATTERY ANALIZER BETA 1498/12-24
- PNEUMATIC WIRE BRUSH
- EXTRACTED DRILL BITS
- ACCU DRILL BOSCH PROFESSIONAL
- DRILLING CROWNS FOR WOOD SET
- BRENER
- HEAT SILICONE GUN

NAVIGATION







EXTERIORS
BEACH CLUB



EXTERIORS
MAIN DECK AFT





EXTERIORS
MAIN DECK FWD







EXTERIORS
UPPER DECK





EXTERIORS
SUN DECK







INTERIORS
MAIN DECK SALON







MAIN DECK
OWNER SUITE











UPPER DECK
SALON



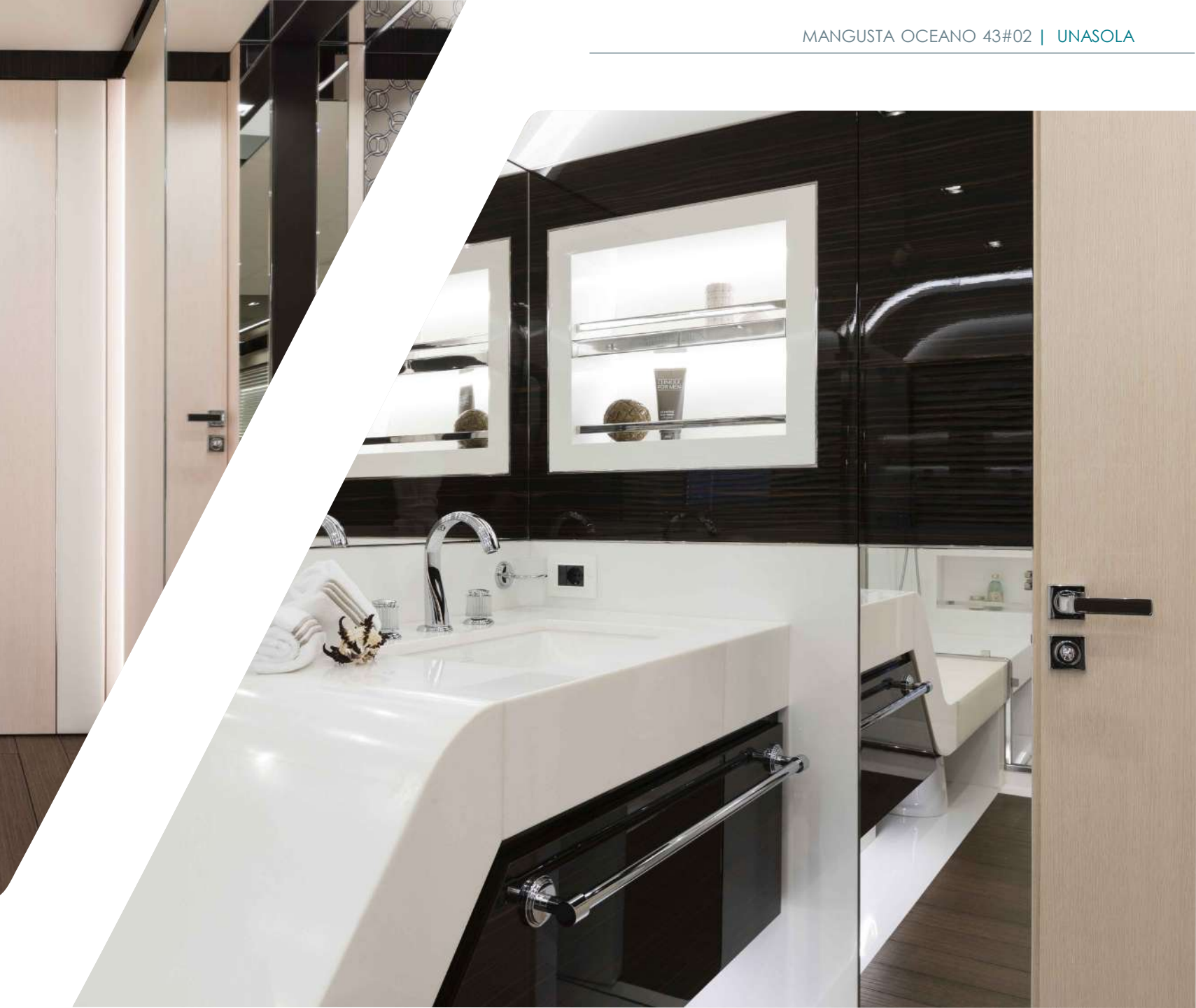




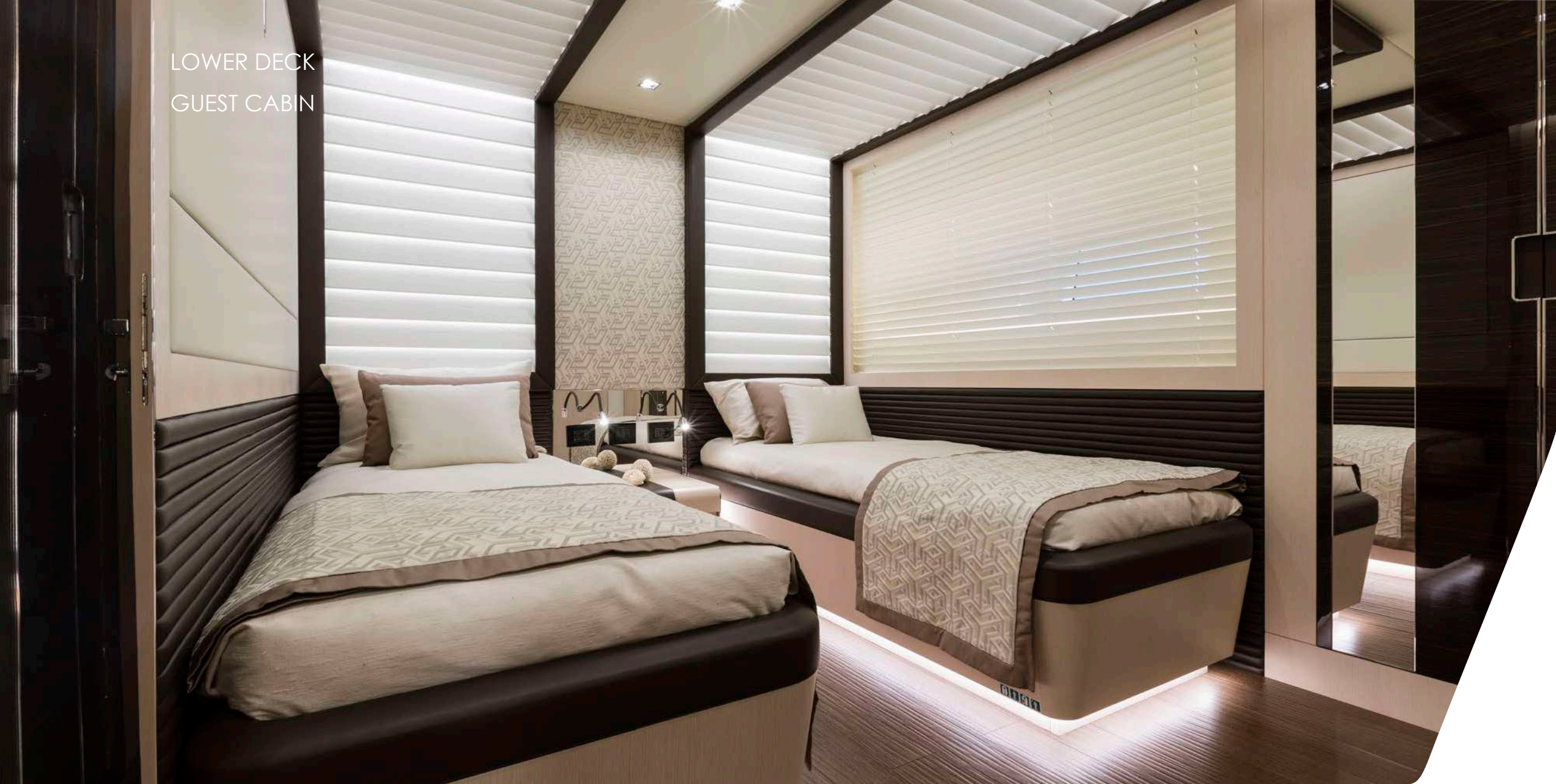


LOWER DECK
VIP CABIN





LOWER DECK
GUEST CABIN





PANTRY

