

M/Y Lara Listing

# M/Y Lara 68ft



# Exterior



# Rear Deck



# Cockpit



# Saloon



M/Y Lara Listing



M/Y Lara Listing



## M/Y Lara Listing



# Kitchen/Hallway

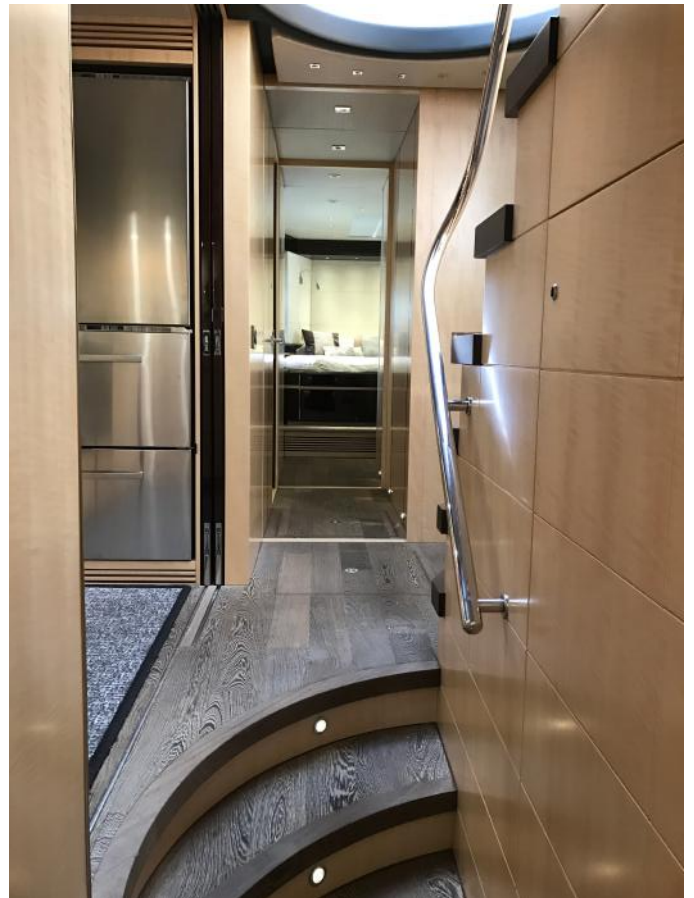
Luxury Yacht Concierge  
Telephone: +30 694 3473380



M/Y Lara Listing



M/Y Lara Listing



# VIP Cabin



M/Y Lara Listing



# Guest Cabin



M/Y Lara Listing



M/Y Lara Listing



M/Y Lara Listing





## M/Y Lara Listing

# Technical Specifications

## PRINCIPAL CHARACTERISTICS

	Classification	CE
Length overall – (incl. pulpit and platform)	21.7m	71' 2"
Length waterline	16.42m	53' 10"
Beam – (maximum)	5.09m	16' 9"
Draft – (@ full load incl. props)	1.58m	5' 2"
Displacement – (@ half load)	37,300kg	82, 209lb
Fuel capacity	3,500 litres	770 GB gal. 925 US gal.
Fresh-water capacity	800 litres	176 GB gal. 211 US gal.
Propulsion	Twin FP props in tunnels	
Engine options	up to 3244PS (total)	
Fuel options	Diesel	
Generators - standard	1 x 19kW @ 50Hz 230v single phase (Euro)	
	1 x 23kW @ 60Hz 120/240v single phase (US)	
Maximum speed	up to 33 knots*	
Cruising speed	up to 24 knots*	
Range	up to 300 nautical miles*	

## M/Y Lara Listing

- |   |  |
|---|--|
| <p><b>1 Construction</b><br/>         Hand-laid GRP<br/>         Gel coat including stripes<br/>         Vinylester skin coat with powderbound mat<br/>         Stitched multi-axial reinforced single-skin bottom<br/>         Balsa-cored hull topsides<br/>         PVC foam-cored deck and superstructure<br/>         Hull stiffened with longitudinal stringers supported by transverse bulkheads and floors</p>  | <p><b>5 Sport Bridge Layout</b><br/>         Large U-shaped seating<br/>         Teak table with stainless steel leg<br/>         Helm seat and navigation seat<br/>         Hydraulic power steering<br/>         2 x radar/chart plotter with GPS<br/>         Autopilot<br/>         Electronic depth and speed displays<br/>         VHF radio<br/>         Magnetic compass<br/>         Horn control<br/>         Switch panel<br/>         Remote controlled spotlight<br/>         Trim tab control<br/>         Sunpad area<br/>         Bimini top in canvas with stainless steel frame<br/>         Wetbar with GRP lid<br/>         Hotplate griddle<br/>         Ice maker<br/>         Ice maker filter<br/>         Pair of marine speakers with remote connected to cockpit stereo<br/>         Teak stairs from cockpit<br/>         Teak cockpit decking</p> |
| <p><b>2 Deck</b><br/>         Fittings in stainless steel<br/>         8 x stainless steel deck cleats<br/>         Pulpit and cockpit rails<br/>         Stainless steel fendering with rubber insert<br/>         Curved safety glass windscreen<br/>         Stainless steel bow roller with anchor stop<br/>         Stainless steel bow plate<br/>         Delta anchor and 60m chain (galvanised)<br/>         Electric winch and capstan with deck and Interior helm controls<br/>         Chain locker with fender storage<br/>         Fender tie bar under anchor locker lid<br/>         Fore deck coach-roof storage lockers<br/>         Fuel fillers port and starboard<br/>         Fresh water filler<br/>         IMCO navigation lights<br/>         2 x Pantograph windscreen wipers and washers<br/>         Garage for tender<br/>         Ensign staff and socket</p> | <p><b>6 Interior Helm Console</b><br/>         Twin helm seats<br/>         Navigation console with chart area<br/>         Hydraulic power steering<br/>         Leather rimmed steering wheel<br/>         Analogue engine instrumentation<br/>         Chart plotter with GPS<br/>         Radar open scanner<br/>         Autopilot<br/>         Speed and depth instrumentation<br/>         VHF radio with DSC<br/>         Rudder indicator<br/>         Water tank gauge<br/>         Fuel tank gauge<br/>         Trim tab controls<br/>         Single-lever electronic engine controls<br/>         Magnetic compass<br/>         Waterproof plug and socket 12v<br/>         Horn<br/>         Windscreen wipers and washers<br/>         Glass holders<br/>         Hand-held fire extinguisher</p>   |
| <p><b>3 Bathing Platform</b><br/>         Hydraulic lifting platform<br/>         Teak-laid bathing platform and steps<br/>         Hot and cold swimming shower<br/>         Fresh water marina connection<br/>         Dockside AC shore power connection<br/>         Stainless steel swimming ladder</p>  | <p><b>7 Deck Saloon</b><br/>         Separate dining area with table<br/>         Stowage beneath seats<br/>         Television 55" on fall and rise system<br/>         Blu-ray/DVD/CD cinema sound system<br/>         AirPort Express<br/>         Drinks cupboard<br/>         Overhead halogen lighting LED 24v<br/>         Stainless steel sliding door to cockpit<br/>         Main control panel (AC/DC)<br/>         Generator controls<br/>         Air conditioning<br/>         3 x double AC sockets<br/>         Wood flooring<br/>         Choice of interior finishes and veneers<br/>         Scatter cushions</p>   |
| <p><b>4 Aft Cockpit</b><br/>         Self-draining<br/>         Teak-laid cockpit decking<br/>         Stern safety door<br/>         Cockpit speakers with CD remote<br/>         Upholstered seating around cockpit table<br/>         Large stern sunbather<br/>         Lockers beneath seating<br/>         Overhead cockpit lights 24v<br/>         Low-level courtesy lights 24v<br/>         Engine room access hatch<br/>         Sport Bridge access stairs<br/>         Boat hook</p>  |  |
| <p><b>8 Galley</b><br/>         Sink and drainer</p>  | <p><b>12 Starboard En Suite Shower Room</b><br/>         Washbasin</p>   |

## M/Y Lara Listing

3-ring ceramic touch-control hob and extractor fan  
 Electric refrigerator  
 Electric freezer  
 Microwave convection oven  
 Hot and cold water  
 Rubbish bin  
 Cupboard and drawer storage  
 8 place crockery set  
 8 place cutlery set  
 2 x double AC sockets  
 Hand-held fire extinguisher  
 First aid kit  
 Wood flooring

### 9 Forward Stateroom

Double berth  
 Storage beneath  
 Drawer in base-end  
 2 x reading lights 24v  
 Outboard shelving and cupboards  
 Overhead bedside cupboards  
 Hanging wardrobes with mirrored panel  
 Overhead lights LED 24v  
 2 x opening portholes with mosquito screens  
 Portlight blinds  
 Deck hatch with blind and mosquito screen  
 Skylight  
 2 x double AC sockets  
 Door to shower room  
 Fitted carpet  
 Air conditioning  
 32" television  
 Blu-ray/DVD/CD player with speakers

### 10 Forward En Suite Shower Room

Washbasin  
 Taps and accessories  
 Hot and cold water supply  
 Separate shower compartment  
 Electric toilet  
 Extractor fan  
 Mirrored vanity unit  
 Shelved cupboard  
 Toothbrush and glass holder  
 Soap dispenser  
 Towel ring and towels  
 Overhead lights  
 Opening porthole with mosquito screen and blind  
 Razor socket 240/110v

### 11 Starboard Guest Cabin

2 x single berths  
 Under-berth storage  
 2 x reading lights 24v  
 Hanging wardrobe  
 Overhead lighting LED 24v  
 Opening porthole with mosquito screen and blinds  
 Double AC socket  
 Fitted carpet  
 Air conditioning  
 22" television  
 Blu-ray/DVD/CD player with speakers

Taps and accessories  
 Hot and cold water supply  
 Separate shower compartment  
 Electric toilet  
 Extractor fan  
 Mirrored vanity unit  
 Shelved cupboard  
 Toothbrush and glass holder  
 Soap dispenser  
 Towel ring and towels  
 Overhead lights LED  
 Opening porthole with mosquito screen and blind  
 Razor socket 240/110v

### 13 Master Aft Stateroom

Double berth  
 Cupboard and drawer stowage  
 2 x reading lights 24v  
 Bedside drawers  
 Walk-in wardrobe  
 Overhead lights LED 24v  
 2 x large windows with opening portholes, mosquito screens and blinds  
 Two double AC sockets  
 Door to shower room  
 Fitted carpet  
 Settee  
 Air Conditioning  
 32" television  
 Blu-ray/DVD/CD player with speakers

### 14 Aft En Suite Shower Room

Washbasin  
 Taps and accessories  
 Hot and cold water supply  
 Separate shower compartment  
 Electric toilet  
 Extractor fan  
 Mirrored vanity unit  
 Shelved cupboard  
 Toothbrush and glass holder  
 Soap dispenser  
 Towel ring and towels  
 Overhead lights LED  
 Opening porthole with mosquito screen and blind  
 Razor socket 240/110v

### 15 Crew Cabin

Entrance door from rear cockpit  
 Two single berths  
 Wardrobe  
 Storage locker  
 Opening porthole with mosquito screen  
 Overhead lights LED  
 Reading lights 24v DC  
 Double AC socket  
 Air conditioning  
 Separate shower room with hot and cold water  
 Electric toilet and holding tank  
 Shaver socket 240/110v

### 16 Electrical System

19kW 50Hz generator with underwater silent exhaust and sound shield  
 AC dockside connection

### 19 Systems

Hydraulic power steering  
 Electric toilet system with integral macerator (24v)  
 Toilets discharging overboard or to black water tank

## M/Y Lara Listing

Galvanic isolator  
 24v and 12v DC electrical system with full circuit breaker protection  
 8 x engine batteries 24v circuit  
 4 x domestic batteries 24v circuit  
 2 x generator batteries 12v circuit  
 Alternator split charging system  
 Remote battery switches controlled from locker in cockpit  
 Battery charger for 24v circuits  
 Battery charger for 12v circuits  
 Water heater  
 AC electrical sockets throughout the boat  
 24v hand light and cable

### 17 Engine Compartment and Ancillaries

Soundproofing throughout  
 Fuel filters/water separators to engines  
 Fuel filters/water separators to generators  
 Automatic bilge and flood pumps with high-level alarms  
 Generator exhaust silencers and water separators  
 Engine exhaust dry risers and water injection  
 Strainers to all raw water inlets  
 Power steering – hydraulic control steering  
 Garage door and trim tabs hydraulic control unit  
 Lifting platform hydraulic control unit  
 Air intakes fitted with emergency shutdown flaps (automatically operated)  
 Air extraction fans (AC) fitted with butterfly shutdown dampers  
 Exhaust gas temperature sensor  
 Fluorescent lights (AC)  
 Engine room fire extinguishing system (FM200)  
 1 x AC 220v socket  
 1 x 24v socket  
 Portable CO<sub>2</sub> fire extinguisher  
 Inspection lamp

### 18 Underwater Gear

Bow thruster – Electric 24v  
 Seawater strainers – nickel plated bronze  
 Full cathodic bonding system to zinc anodes  
 Hydraulic trim tabs – stainless steel  
 Propeller shafts – Temet 25  
 High performance rudders – AB2  
 P-brackets – NAB nickel aluminium bronze c/w water lubricated bearing  
 Self-aligning shaft seal including spare seal  
 5-blade AB2 bronze propellers

Black water tank discharging to dockside or overboard  
 Aluminium fresh water tank with electric sending unit  
 Fuel tank with electric sending unit  
 Water pressure system (24v)  
 Washbasins, showers and air conditioning fan coils to drain to grey water tank  
 Grey water tank discharging overboard  
 Self-contained air conditioning system (reverse cycle) AC  
 Bilge pumping system (24v)  
 Manual/automatic fire extinguishing system combined with engines, generators and fans shutdown  
 Auxiliary hydraulics for trim tabs and platform (24v)  
 20 Miscellaneous  
 Toolkit  
 Boat

### 20 Miscellaneous

Toolkit  
 Boat hook  
 4 x mooring ropes  
 8 x fenders  
 3 sets towels

### Optional Extras

Teak side decks  
 Hydraulic gangway  
 Bow sunbathing cushions

### Original

- › Additional pair 12" oval mooring cleats fitted to the aft lower edge of the hull band facing aft
- › Aerial 2.4 metre whip for FM Radio to match VHF aerial on radar arch
- › Miele novotronic WT2780 washer-dryer
- › Rear camper with windows
- › Safe - 2 brick - with digital lock

## M/Y Lara Listing

- › Air conditioning European specification
- › Antifouling to be international interspeed ultra black
- › Apple airport express and a HDMI socket linked to AV System in the Saloon
- › Bimini top in canvas with stainless steel frame work
- › Bow sunbathing cushions with folding back rests
- › Bow thruster - Sleinper SE170/250TC-24V - 10.7hp
- › Burglar alarm - Remote controlled microwave alarm system
- › Compass swinging and adjustment with correction card
- › Contemporary signature interior scheme (Wenge / Anegre) with contrasting wooden flooring in Saloon generator Onan 19kw 50Hz (19MDKBV)
- › Electric BBQ grill in the Sports Bridge wet bar
- › Fresh water deck wash system with outlets on Bathing Platform, Flybridge
- › Harmon Kardon BDS2 - 2.1 Cinema sound system linked cabin TV in the Saloon
- › Harmon Kardon BDS2 stereo sound system with Apple iPad/iPhone Airport Express wireless connectivity and an Auxiliary HDMI socket linked to AV system in the Master Stateroom and Forward VIP cabins
- › Harmon Kardon BDS2 stereo sound system with Apple iPad/iPhone Airport Express wireless connectivity and an Auxiliary HDMI socket linked to AV system in the Starboard Guest Cabin
- › Hydraulic telescopic gangway 4.0 metres with teak grate walkway
- › Hydraulically lifting platform with maximum lift capacity of 450kg
- › Icemaker Vicrofrigo classic in the Sports Bridge Wet Bar
- › Instrument Cover for flybridge console and lower console
- › Insulated ice chest with Coolmatic TBSC 100 in the Sports Bridge Wet Bar
- › Jabsco single beam dual station control searchlight
- › Lifteraft 8 man canister in sunpad storage space
- › Low level LED side deck lights 8 per side
- › Samsung 22" LED Television in the Starboard Guest Cabin
- › Samsung 32" LED Television in the Master Stateroom and Forward VIP Cabins
- › Samsung 55" LED Television in the Saloon
- › Simrad Autopilot repeater iS40 pilot display and OP10 pilot keypad
- › Simrad IS40 speed/depth instrument x 2
- › Simrad RS82 VHF Radio with DSC function
- › Sprung mattress for double bed for the Master Stateroom and Forward VIP Cabin
- › Sprung mattress for single beds for the Starboard Guest Cabin
- › Stern docking lights
- › Stern docking winches - Lewmar C3 fitted port and starboard
- › Stern thruster - Sleinper SE170/250TC-24V - 10.7hp
- › Sunseeker safety kit
- › Teak decking for the Aft Cockpit and Sports Bridge
- › Teak table with centre feature in glass with Sunseeker logo on the Aft Cockpit and Sports Bridge
- › Tender recovery roller system
- › Two 7" Fusion Marine waterproof speakers for the Sports Bridge
- › Two 7" Fusion Marine waterproof speakers with waterproof remote control in the Aft Cockpit
- › Two Simrad NSS12 colour 12.1" multifunctional touch screen chart plotter displays
- › Waeco coolmatic 80 litre refridgerator in the Aft Cockpit
- › Water purifier for ice maker - General ecology ultrafine in-line system with spare cartridge
- › Williams 325 Turbojet tender (100hp) in std white incl. packaging, ex delivery (chocks to be specified)
- › Winch - Lewmar anchor winch V5GD-24V › Windscreen cover
- › Wine cooler

### Post Production

- › 3/4g Pepwave Wi-Fi system to the yacht
- › 90 meters of galvanized 9.5mm anchor chain
- › Cockpit privacy cover
- › Fresh water maker
- › Full exterior seating covers package
- › Increased air conditioning BTUs output to tropical
- › Satellite TV with decoders to main Saloon/Master and VIP
- › Stainless steel anchor
- › Stainless steel back lit boat name
- › Standby fresh-water pump
- › Under water lights (white)

### Disclaimer

\*Every attempt has been made to give accurate information, but performance and range figures are estimates given as a guide only. Dirt or growth on the hull, tuning of the engines, size, make of engines fitted, damage to propellers, the temperature of the air and water, the weight of fuel, water, stores, number of people, propeller pitch, quality of fuel and other matters, can all affect a boat's performance and range. For these and other reasons we can give no performance, range or other guarantees, and neither such guarantees nor anything contained herein constitutes an offer of contract or any representation or agreement, or may otherwise be relied upon. The photographs and artist's impressions in this brochure are of existing models .